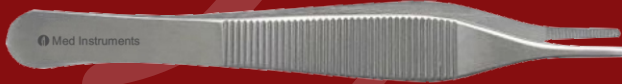
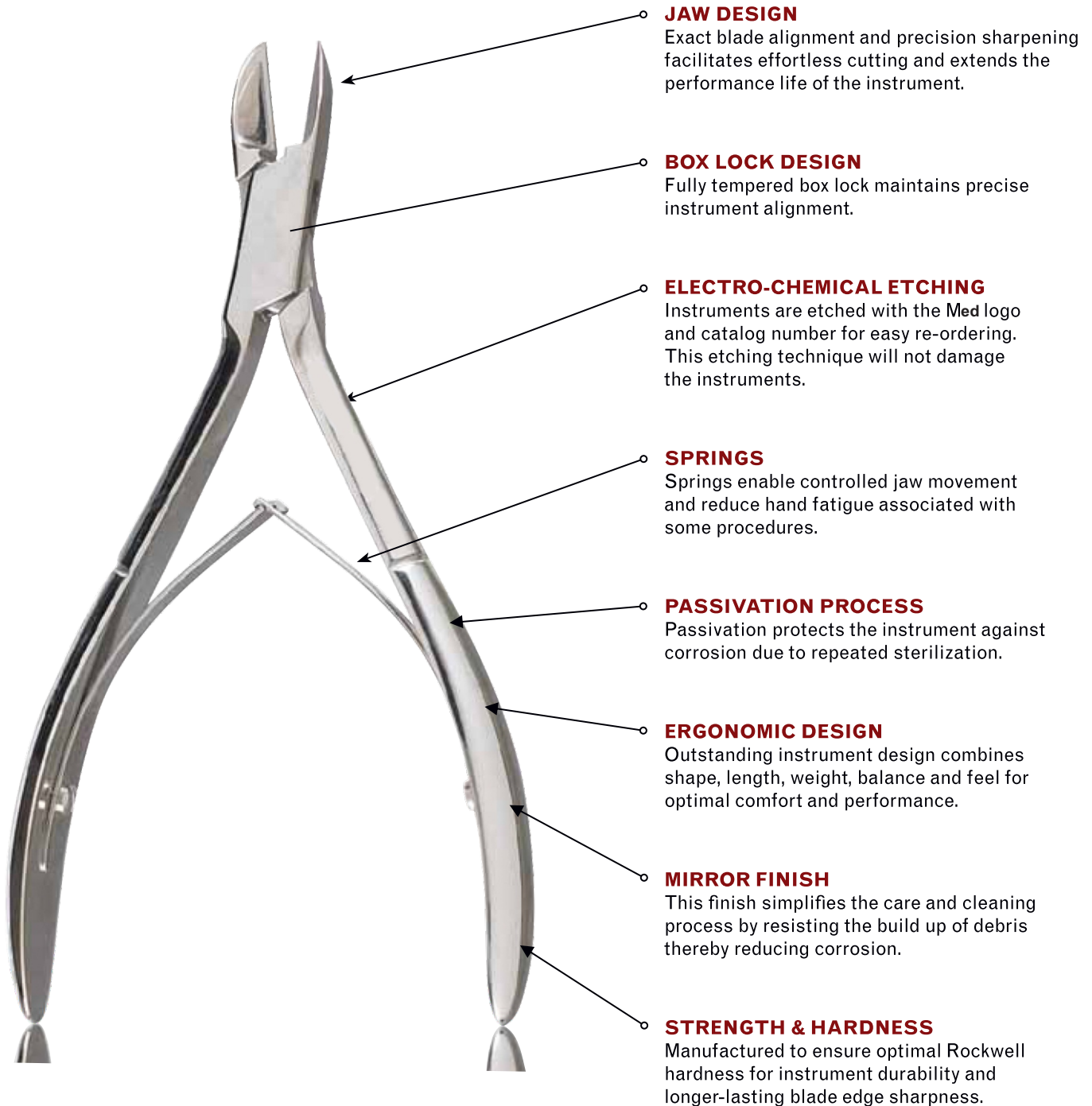


# PODIATRY INSTRUMENTS



Nail Nippers.....	01-02
Double Action Nail Nippers.....	03
Nail Splitter & Forceps.....	04
Cutting Forceps.....	05
Tissue & Cuticle Nippers.....	06
Nail Nippers & Splitter.....	07
Chrome Nail Instruments.....	08-09
Curettes.....	10
Chisels & Knives.....	11
Specialty Instruments.....	12
Crown & Collar Scissors.....	13-15
Podiatric Specialty Scissors.....	16
Shannon Bone Burs.....	17
Bone Files.....	18
Rasp.....	19
Elevators.....	20
Metatarsal Elevators.....	21-22
Clamps & Tendon Forceps.....	23
Bone Clamps & Elevators.....	24
Diagnostic Instruments.....	25
Disposable Products & Inst.....	26
Stainless Steelware.....	27
Instruments Stringers.....	28-30



**JAW DESIGN**

Exact blade alignment and precision sharpening facilitates effortless cutting and extends the performance life of the instrument.

**BOX LOCK DESIGN**

Fully tempered box lock maintains precise instrument alignment.

**ELECTRO-CHEMICAL ETCHING**

Instruments are etched with the Med logo and catalog number for easy re-ordering. This etching technique will not damage the instruments.

**SPRINGS**

Springs enable controlled jaw movement and reduce hand fatigue associated with some procedures.

**PASSIVATION PROCESS**

Passivation protects the instrument against corrosion due to repeated sterilization.

**ERGONOMIC DESIGN**

Outstanding instrument design combines shape, length, weight, balance and feel for optimal comfort and performance.

**MIRROR FINISH**

This finish simplifies the care and cleaning process by resisting the build up of debris thereby reducing corrosion.

**STRENGTH & HARDNESS**

Manufactured to ensure optimal Rockwell hardness for instrument durability and longer-lasting blade edge sharpness.

Concave/curved nippers help reduce excessive motion by the provider to reach nail borders.



REF	Description
MI-210-SS	<b>Nail Nipper, 5-1/2" (14 cm), concave jaws, double spring, stainless</b>
MI-212-SS	Nail Nipper, 5-1/2" (14 cm), straight jaws, double spring, stainless
MI-215-SS	Nail Nipper, 5-1/2" (14 cm), angled concave jaws, double spring, stainless
MI-217	Nail Nipper, 5" (12.7 cm), concave jaws, double spring, stainless

**IMPORTANT:** For optimal performance and to reduce spring breakage, it is crucial that instrument cutting edges be sharpened by the manufacturer every 6-8 months. This may vary depending on usage rate and number of times instruments are cycled. See page 48 for Service Repair and Return Instructions.

Items in **bold** represent the most popular patterns.



REF	Description
MI-224	<b>Nail Nipper, 4" (10.2 cm), straight jaws, double spring, stainless</b>
MI-225-SS	Nail Nipper, 4-1/2" (11.4 cm), straight jaws, double spring, stainless
MI-225A	Nail Nipper, 4-1/2" (11.4 cm), delicate straight jaws, double spring, stainless
MI-226-SS	<b>Nail Nipper, 5" (12.7 cm), straight jaws, double spring, stainless</b>
MI-226A	Nail Nipper, 5" (12.7 cm), straight jaws, extra narrow, double spring, stainless
MI-227-SS	Nail Nipper, 6" (15.2 cm), straight jaws, double spring, stainless
MI-228	Nail Nipper, 6" (15.2 cm), straight jaws, extra narrow, double spring, stainless
MI-204	Wing-Grip <b>Nail Nipper, 4-1/2" (11.4 cm), curved jaws NEW!</b>
MI-208	Wing-Grip <b>Nail Nipper, 5" (12.7 cm), curved jaws NEW!</b>

Items in **bold** represent the most popular patterns.

Ideal for Mycotic nails.  
Concave/curved nippers minimize  
soft tissue infiltration and destruction.



MI-218



MI-218PT



MI-219



MI-219PT

REF	Description
MI-218	Double Action Nail Nipper, 6" (15.2 cm), straight jaws, stainless (ideal for mycotic nails)
MI-218PT	Double Action Nail Nipper, Petite, 4-1/2" (11.4 cm), straight jaws, stainless
MI-219	<b>Double Action Nail Nipper, 6" (15.2 cm), concave jaws, stainless</b>
MI-219PT	Double Action Nail Nipper, Petite, 4-1/2" (11.4 cm), concave jaws, stainless

Items in **bold** represent the most popular patterns.

English Anvil Nail Splitter eliminates plate lysis from nail bed and minimizes secondary mycotic infections. Ideal for Dystrophic Onychocryptotic nail.



REF	Description
MI-230	<b>Nail Splitter, 5" (12.7 cm), English Anvil pattern, double spring, stainless</b>
MI-234	Platyplus Nail Pulling Forceps, 5-1/2" (14 cm), standard width jaws, stainless
MI-235	Platyplus Nail Pulling Forceps, 5-1/2" (14 cm), narrow jaws, stainless

Items in **bold** represent the most popular patterns.

Ideal for Mycotic Nails.  
Versatile for both bone nipping and nail cutting.  
Thicker gauge prevents tips from splitting.  
Double Action Forceps are ideal for small hands and to combat fatigue.  
Useful in Hypertrophic bone/soft tissue proliferation.



REF	Description
MI-1308	LISTON-BLAU Bone Cutting Forceps, 5-1/2" (14 cm), straight narrow blades
MI-626	RUSKIN (KLEINERT-KUTZ) Bone Splitting Forceps, 5-3/4" (14.6 cm), straight
MI-627	RUSKIN (KLEINERT-KUTZ) Bone Splitting Forceps, 5-3/4" (14.6 cm), curved
MI-384	RUSKIN Bone Cutting Forceps, 7-1/2" (19.1 cm), straight standard blades
MI-385	RUSKIN Bone Cutting Forceps, 7-1/2" (19.1 cm), slightly angled standard blades
MI-628	RUSKIN (ROWLAND) Nasal Hump Forceps, 7" (17.8 cm), double action, narrow jaws



Useful on ulcers with peripheral hyperkeratosis.



MI-245-SS



MI-250-SS  
MI-251-SS



MI-252

REF	Description
MI-245-SS	Tissue and Cuticle Nipper, 4" (10.2 cm), convex jaws, stainless
MI-250-SS	<b>Tissue and Cuticle Nipper, 4-1/2" (11.4 cm), convex jaws, stainless</b>
MI-251-SS	Tissue and Cuticle Nipper, 5" (12.7 cm), convex jaws, stainless
MI-252	Tissue and Cuticle Nipper, 5" (12.7 cm), convex jaws, heavy pattern, stainless

**IMPORTANT: Removing scalpel blades or cutting wire using nippers and/or splitters will nick and dull the blade edges and void all warranties.**

Items in **bold** represent the most popular patterns.

Expertly crafted from surgical grade stainless steel German forgings and of the very highest Operating Room quality standards and specifications. This new instrument line is advantageously priced while offering greater quality and value compared to instruments from any other source.



MI-210-SS



MI-212-SS



MI-224



MI-225-SS



MI-226A

REF	Description
MI-210-SS	Nail Nipper, 5-3/4" (14.6 cm), concave, stainless steel
MI-212-SS	Nail Nipper, 5-3/4" (14.6 cm), straight, stainless steel
MI-224	Nail Nipper, 4" (10.2 cm), straight, stainless steel
MI-225-SS	Nail Nipper, 4-1/2" (11.4 cm), straight, stainless steel
MI-226A	Nail Nipper, 5" (12.7 cm), delicate, straight, stainless steel



MI-226-SS



MI-227-SS



MI-230



MI-245-SS



MI-250-SS

REF	Description
MI-226-SS	Nail Nipper, 5" (12.7 cm), straight, stainless steel
MI-227-SS	Nail Nipper, 6" (15.2 cm), heavy, straight, stainless steel
MI-230	Nail Splitter, 5" (12.7 cm), english anvil, stainless steel
MI-245-SS	Tissue & Cuticle Nipper, 4" (10.2 cm), convex, stainless steel
MI-250-SS	Tissue & Cuticle Nipper, 4-1/2" (11.4 cm), stainless steel

**IMPORTANT:** Corrosion and/or discoloration may occur if stainless steel and other dissimilar metals (e.g., chrome-plated) are sterilized together. Separate instruments prior to autoclaving.



MI-210-CH



MI-210-CH  
MI-212-CH



MI-212-CH



MI-215-CH



MI-225-CH



MI-226-CH



MI-227-CH



MI-226-CH



MI-245-CH



MI-250-CH  
MI-251-CH

REF	Description
MI-210-CH	Nail Nipper, 5-1/2" (14 cm), concave jaws, double spring, chrome
MI-212-CH	Nail Nipper, 5-1/2" (14 cm), straight jaws, double spring, chrome
MI-215-CH	Nail Nipper, 5-1/2" (14 cm), angled concave jaws, double spring, chrome
MI-225-CH	Nail Nipper, 4-1/2" (11.4 cm), straight jaws, single spring, chrome
MI-226-CH	Nail Nipper, 5" (12.7 cm), straight jaws, single spring, chrome
MI-227-CH	Nail Nipper, 6" (15.2 cm), straight jaws, single spring, chrome
MI-245-CH	Tissue and Cuticle Nipper, 4" (10.2 cm), convex jaws, double spring, chrome
MI-250-CH	Tissue and Cuticle Nipper, 4-1/2" (11.4 cm), convex jaws, double spring, chrome
MI-251-CH	Tissue and Cuticle Nipper, 5" (12.7 cm), convex jaws, double spring, chrome

Chrome Instruments are ideal for home care patient maintenance.

**IMPORTANT:** Corrosion and/or discoloration can occur if stainless steel and other dissimilar metals (e.g., chrome-plated) are sterilized together. Separate instruments prior to autoclaving.



MI-200



MI-205  
MI-207



MI-220



MI-425



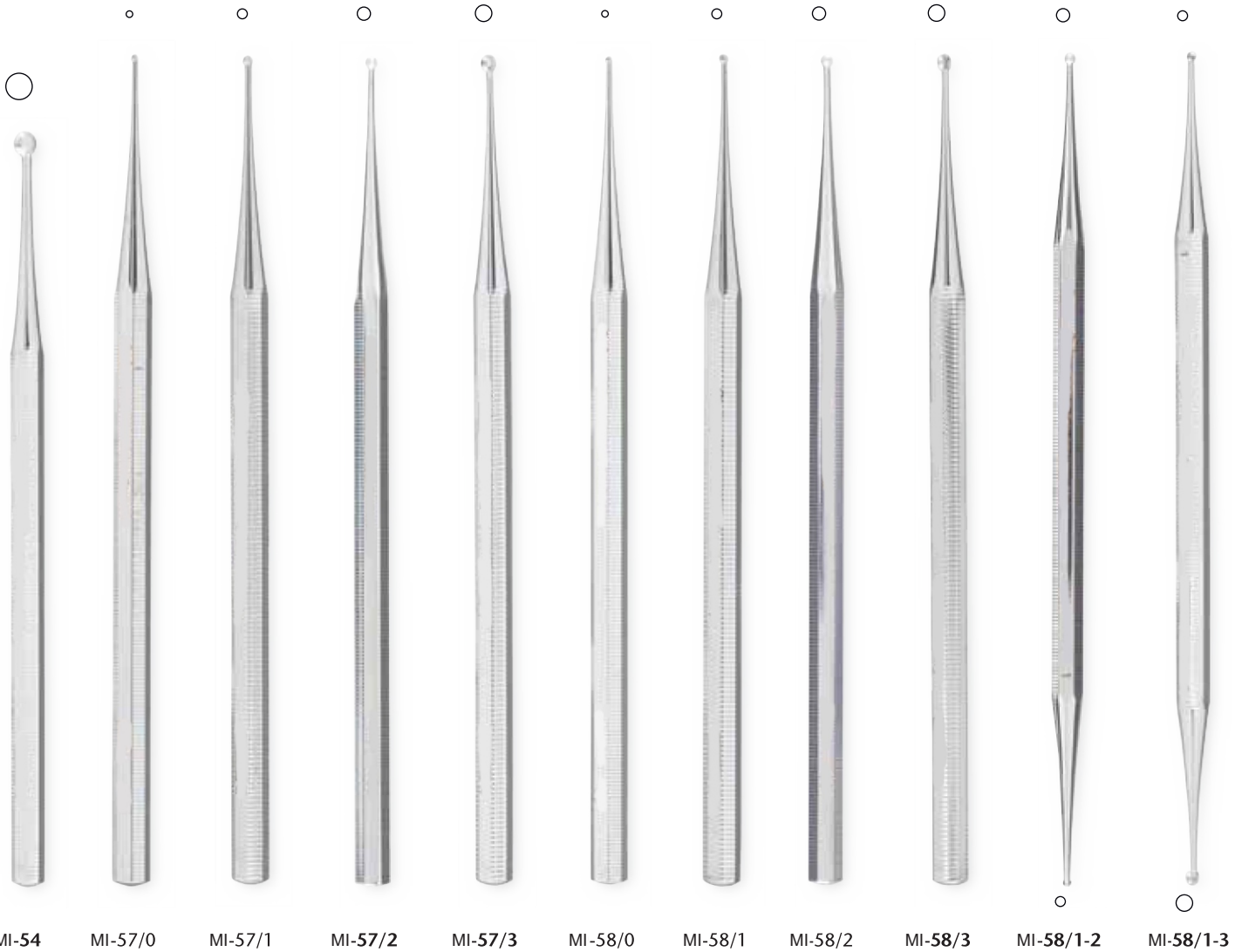
MI-435



MI-445

REF	Description
MI-200	Nail Nipper, 4-1/2" (11.4 cm), concave jaws, single spring, chrome
MI-205	Nail Nipper, 4-1/2" (11.4 cm), concave jaws, barrel spring, chrome
MI-207	Nail Nipper, 5-1/2" (14 cm), concave jaws, barrel spring, chrome
MI-220	Tissue and Cuticle Nipper, 4" (10.2 cm), straight jaws, ring handles, chrome
MI-425	Nail Scissors, 3-1/2" (8.9 cm), curved blades, chrome
MI-435	Cuticle Scissors, 3-1/2" (8.9 cm), curved blades, standard pattern, chrome
MI-445	Cuticle Scissors, 3-1/2" (8.9 cm), curved blades, extra delicate, chrome

Removal of hyperkeratotic debris from nail groove.  
May be useful to probe abscess sinus tracts.



REF	Description
MI-54	<b>Verruca Curette, 5" (12.7 cm), 4 mm cup</b>
MI-57/0	Curette without Hole, 5-1/2" (14 cm), extra small, 1 mm diameter
MI-57/1	Curette without Hole, 5-1/2" (14 cm), small, 1.5 mm diameter
MI-57/2	<b>Curette without Hole, 5-1/2" (14 cm), medium, 2 mm diameter</b>
MI-57/3	<b>Curette without Hole, 5-1/2" (14 cm), large, 2.5 mm diameter</b>
MI-58/0	Curette with Hole, 5-1/2" (14 cm), extra small, 1 mm diameter
MI-58/1	Curette with Hole, 5-1/2" (14 cm), small, 1.5 mm diameter
MI-58/2	Curette with Hole, 5-1/2" (14 cm), medium, 2 mm diameter
MI-58/3	<b>Curette with Hole, 5-1/2" (14 cm), large, 2.5 mm diameter</b>
MI-58/1-2	<b>Curette Excavator, 5-1/2" (14 cm), double end, with holes, 1.5 mm and 2 mm</b>
MI-58/1-3	<b>Curette Excavator, 5-1/2" (14 cm), double end, with holes, 1.5 mm and 2.5 mm</b>

Items in **bold** represent the most popular patterns.



MI-07

MI-09

MI-11

MI-15

MI-19

MI-31

MI-43

MI-45

MI-47

REF	Description
MI-07	Chisel, 5" (12.7 cm) solid octagon handle, curved, 13 mm edge
MI-09	Chisel, 5" (12.7 cm) solid octagon handle, curved, 18 mm edge
MI-11	Chisel, 5" (12.7 cm) solid octagon handle, curved, 8 mm edge
MI-15	Chisel, 5" (12.7 cm) solid octagon handle, curved, 15 mm edge
MI-19	Knife, 5" (12.7 cm) solid octagon handle, straight back, 25 mm curved edge
MI-31	Corn Knife, 5" (12.7 cm) solid octagon handle, heavy, 35 mm blade
MI-43	Golf Stick Knife, 5" (12.7 cm) solid octagon handle, forward cutting edge
MI-45	Soft Corn Spoon Knife, 5" (12.7 cm) solid octagon handle, straight blade
MI-47	<b>Soft Corn Spoon Knife, 5" (12.7 cm) solid octagon handle, curved blade</b>

Items in **bold** represent the most popular patterns.



REF	Description
MI-59	<b>Nail Splitter, 5" (12.7 cm), straight, 2 mm wide</b>
MI-60	Nail Splitter, 5" (12.7 cm), angled, 2 mm wide
MI-61	Nail Splitter, 5" (12.7 cm), straight, 3.5 mm wide
MI-62	Nail Splitter, 5" (12.7 cm), angled, 3.5 mm wide
MI-67	Hand Chisel, 5" (12.7 cm), curved edge, 6 mm wide
MI-69	Elevator, 5" (12.7 cm), curved blade, semi sharp
MI-71	Nucleus Knife, 5" (12.7 cm), 2 mm
MI-73	Nucleus Knife, 5" (12.7 cm), 3 mm
MI-75	Nucleus Knife, 5" (12.7 cm), 4 mm
MI-79	Gouge, 5" (12.7 cm), round tip, 2.5 mm wide
MI-81	Ingrown Nail Shaver, 5" (12.7 cm), fenestrated blade with inside cutting edge
MI-83	Ingrown Nail Cutter, 5" (12.7 cm), sharp hook edge
MI-430	Med Tissue Twist Hook, 5-1/2" (14 cm)

Items in **bold** represent the most popular patterns.





REF	Description
MI-89	Probe and Excavator, 6" (15.2 cm), blunt probe and blunt hook end
MI-90	Packer and Excavator, 5-1/2" (14 cm), 2 X 25 mm packer and blunt hook end
MI-91	<b>Spatula and Packer, 6" (15.2 cm), oval spatula 7 mm wide and 2 X 25 mm packer</b>
MI-92	Probe and Packer, 6" (15.2 cm), blunt probe and 2 X 25 mm packer
MI-93	<b>Nail or Bone Rasp, 6-3/4" (17.1 cm), double end, backwards cutting</b>
MI-94	<b>LOCKE Elevator, 4-1/2" (11.4 cm), small blade, 3 X 15 mm</b>
MI-96	LOCKE Elevator, 5" (12.7 cm), large blade, 5 X 20 mm

Items in **bold** represent the most popular patterns.

Ideal for sesamoidectomy and releasing plantar capsular adhesions.



MI-120

MI-122



MI-121

MI-123



MI-132

MI-134



MI-133

MI-135

REF	Description
MI-120	Crown and Collar (wire cutting) Scissors, 4-3/4" (12.1 cm), straight, one serrated blade
MI-122	Crown and Collar (wire cutting) Scissors, 4-3/4" (12.1 cm), curved, one serrated blade
MI-121	Crown and Collar (wire cutting) Scissors, 4-3/4" (12.1 cm), straight
MI-123	Crown and Collar (wire cutting) Scissors, 4-3/4" (12.1 cm), curved
MI-132	Crown and Collar (wire cutting) Scissors, 4-1/4" (10.8 cm), straight, one serrated blade
MI-134	Crown and Collar (wire cutting) Scissors, 4-1/4" (10.8 cm), curved, one serrated blade
MI-133	Crown and Collar (wire cutting) Scissors, 4-1/4" (10.8 cm), straight
MI-135	Crown and Collar (wire cutting) Scissors, 4-1/4" (10.8 cm), curved



REF	Description
MI-260	Ingrown Nail Splitting Scissors, 6" (15.2 cm), stainless
MI-460	<b>Moleskin and Felt Scissors, 7-1/2" (19.1 cm), sharp/blunt points, straight</b>
MI-465	Moleskin and Felt Scissors, 7-1/2" (19.1 cm), sharp/blunt points, curved
MI-1700	<b>Utility Scissors, 6-1/2" (16.5 cm), straight, sharp/blunt, one serrated blade, extra heavy</b>
MI-1704	Utility Scissors, 6-1/2" (16.5 cm), curved, sharp/blunt, one serrated blade, extra heavy
MI-1702	Utility Scissors, 6-1/2" (16.5 cm), straight, blunt/blunt, one serrated blade, extra heavy
MI-1706	Utility Scissors, 6-1/2" (16.5 cm), curved, blunt/blunt, one serrated blade, extra heavy

Items in **bold** represent the most popular patterns.

Ideal for minimal incision digital exostectomy.



MI-1350



MI-1351



MI-1352

REF	Description
MI-1350	SHANNON Handpiece Bone Burs, stainless, standard pattern, no. 43, for regular Handpiece
MI-1351	<b>SHANNON Handpiece Bone Burs, stainless, standard pattern, no. 44, for regular Handpiece</b>
MI-1352	SHANNON Handpiece Bone Burs, stainless, pattern no. 44, gold titanium nitride coated, for regular Handpiece

Items in **bold** represent the most popular patterns.



MI-1370

MI-1381

MI-1382

MI-1385

MI-1371

MI-1380

MI-1375

MI-2800

MI-2801

MI-2802

REF	Description
MI-1370	Bone File, double end no. 10 pattern, 7" (17.8 cm), plain serrations
MI-1381	<b>Bone File, double end no. 12 HOWARD pattern, 7" (17.8 cm), plain serrations</b>
MI-1382	<b>Bone File, double end no. 12A HOWARD pattern, 7" (17.8 cm), one end plain, other end cross serrated</b>
MI-1385	Bone File, double end no. 12CA HOWARD BELL pattern, 7" (17.8 cm), cross serrations
MI-1371	Bone File, double end no. 33 pattern, 7" (17.8 cm), plain serrations
MI-1380	Bone File, double end no. 45 MILLER pattern, 7" (17.8 cm), plain serrations
MI-1375	Bone File, double end no. 64 MILLER pattern, 7" (17.8 cm), plain serrations
MI-2800	POLOKOFF Bone File, 7-1/4" (18.4 cm), double end, narrow pattern (POL-1)
MI-2801	POLOKOFF Bone File, 6" (15.2 cm), short head, fine serrations (POL-2)
MI-2802	POLOKOFF Bone File, 6-1/2" (16.5 cm), long head, medium serrations

Items in **bold** represent the most popular patterns.



REF	Description
MI-330	JOSEPH Rasp, 6-1/4" (15.9 cm), fine cross serrations
MI-338	COTTLE Rasp, 8" (20.3 cm), backward cutting
MI-342	MALTZ Nasal Rasp, 7" (17.8 cm), backward cutting
MI-343	<b>MALTZ Rasp, 8-1/4" (21 cm), improved double end pattern, forward and backward cutting</b>
MI-346	AUFRIEHT Glabella Rasp, 7-1/8" (18.1 cm), forward cutting
MI-348	AUFRIEHT Glabella Rasp, 7-1/8" (18.1 cm), backward cutting
MI-352	LEWIS Nasal Rasp, 7-1/2" (19.1 cm), fine teeth, backward cutting
MI-354	LEWIS Nasal Rasp, 7-1/2" (19.1 cm), coarse teeth, backward cutting
MI-360	GALLAHER Rasp, 6-1/2" (16.5 cm), coarse teeth, straight
MI-368	<b>FOMON Rasp, 8-1/4" (21 cm), double ended, 4-sided, fine and coarse teeth, both in flat and convex</b>
MI-369	FOMON Rasp, 8-1/4" (21 cm), double ended, coarse
MI-370	FOMON Rasp, 8-1/4" (21 cm), double ended, fine

Items in **bold** represent the most popular patterns.



MI-62

MI-63

MI-64

MI-68

MI-72

MI-1403

MI-1410

MI-1412

REF	Description
MI-62	MCKENTY Elevator, 6" (15.2 cm), curved tip, 4 mm wide
MI-63	MCKENTY Elevator, 6" (15.2 cm), curved tip, 5 mm wide
MI-64	<b>JOSEPH Periosteal Elevator, 7" (17.8 cm), strong curve, 6.5 mm</b>
MI-68	FOMON Periosteal Elevator, 6-1/4" (15.9 cm), slightly curved blade, 4.5 mm wide, standard pattern
MI-72	COTTLE Skin Elevator, 7-1/2" (19.1 cm), slightly curved blade 9 mm wide
MI-1403	CUSHING "Little Joker" Periosteal Elevator, 6" (15.2 cm)
MI-1410	LANGENBECK Periosteal Elevator, 7-1/2" (19.1 cm), narrow model, 7 mm wide blunt blade
MI-1412	<b>LANGENBECK Periosteal Elevator, 7-1/2" (19.1 cm), wide model, 17 mm wide sharp blade</b>

Items in **bold** represent the most popular patterns.

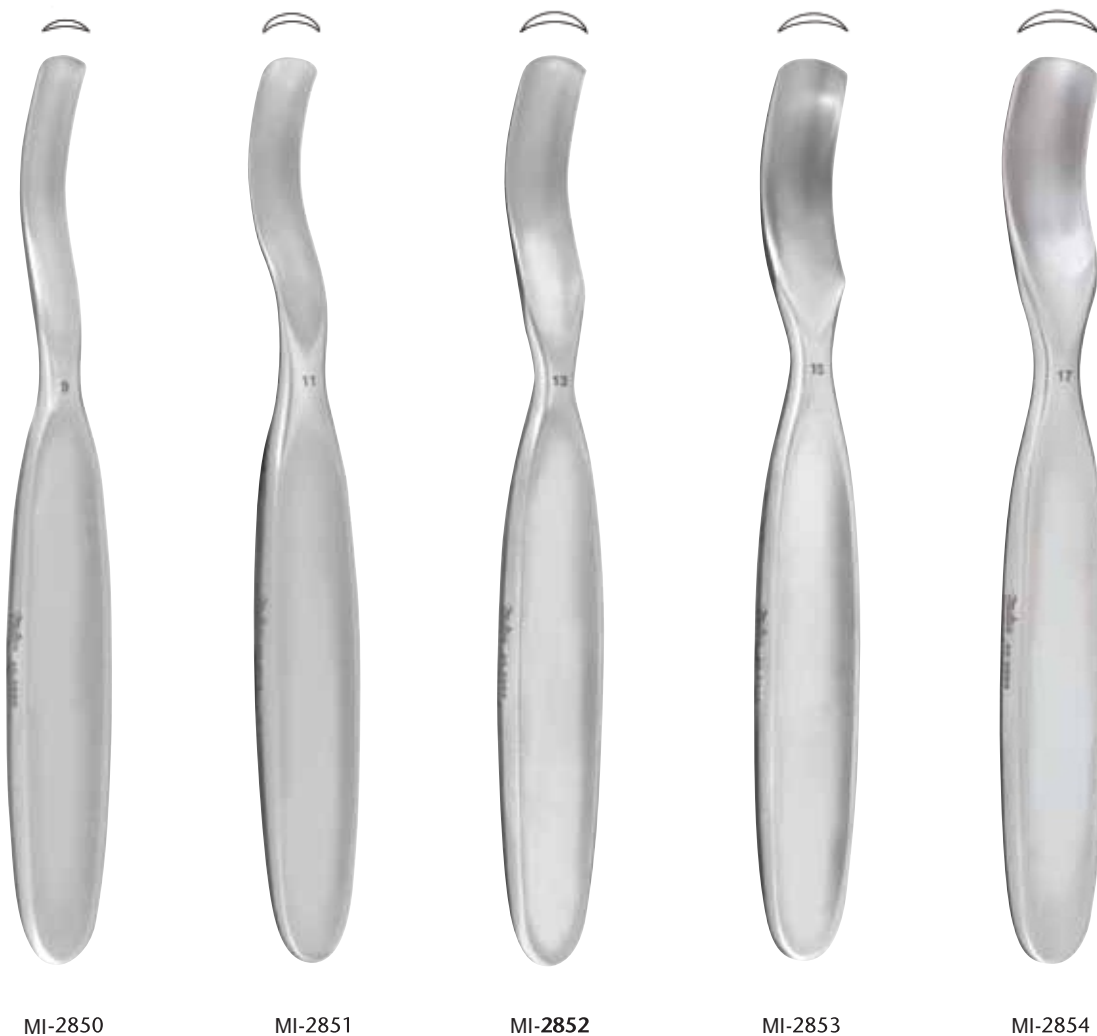


REF	Description
MI-744	<b>SAYRE Periosteal Elevator, 6-3/4" (17.1 cm), one straight blunt and one curved sharp end</b>
MI-746	SAYRE Periosteal Elevator, 6-3/4" (17.1 cm), one straight blunt and one curved blunt end
MI-752	CREGO Periosteal Elevator, 8" (20.3 cm), slightly curved blade 7 mm
MI-753	CREGO Periosteal Elevator, 8" (20.3 cm), fully curved blade 7 mm
MI-754	CREGO Periosteal Elevator, 8" (20.3 cm), fully curved blade 14 mm
MI-1968	<b>FREER Elevator, 7" (17.8 cm), double end sharp and blunt blades 5 mm wide</b>
DELOHL	OHL Periosteal Elevator, 7" (17.8 cm), double end, 6 mm wide sharp rounded and pointed blades
DELS23	23 SELDIN Periosteal Elevator, 7-3/4" (19.7 cm), double end, slightly curved blades 10 mm and 13 mm wide
MI-62	Periosteal Elevator, 6" (15.2 cm), double end, slightly curved blade 6 mm wide and straight spear point rounded blade 3 mm wide

Items in **bold** represent the most popular patterns.



Releasing plantar plate adhesions.  
Assists in freeing the phalanx base during implant surgery.  
Deglove metatarsal head.



REF	Description
MI-2850	Metatarsal Elevator, 6-3/8" (16.2 cm), blade 9 mm wide
MI-2851	Metatarsal Elevator, 6-3/8" (16.2 cm), blade 11 mm wide
MI-2852	<b>Metatarsal Elevator, 6-3/8" (16.2 cm), blade 13 mm wide</b>
MI-2853	Metatarsal Elevator, 6-3/8" (16.2 cm), blade 15 mm wide
MI-2854	Metatarsal Elevator, 6-3/8" (16.2 cm), blade 17 mm wide
MI-2855	<b>Metatarsal Elevator Kit, contains 1 of each size</b>

Items in **bold** represent the most popular patterns.



MI-1800



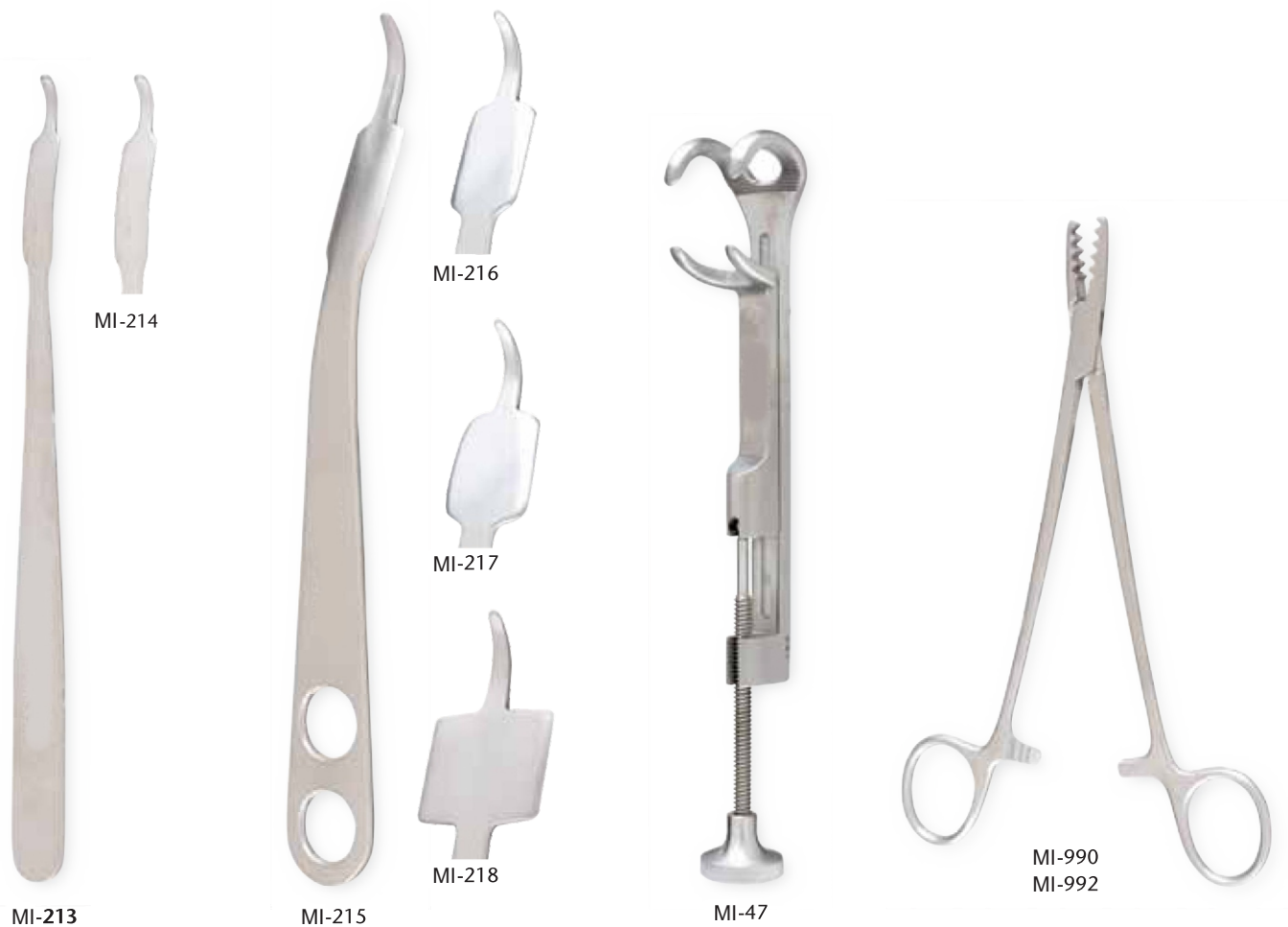
MI-1802



MI-1016

REF	Description
MI-1800	LOCKE Phalangeal Clamp, 6" (15.2 cm)
MI-1802	ROSENBLOOM Sesamoidectomy Clamp, 7" (17.8 cm)
MI-1016	Tendon Pulling Forceps, 5" (12.7 cm), curved shaft, alligator type

Mini-Hohmann Retractors are ideal for ORIF of metatarsal and fibular fractures.



REF	Description
MI-213	<b>Mini-HOHMANN Retractor, 6-1/4" (15.9 cm), blade 6 mm wide</b>
MI-214	Mini-HOHMANN Retractor, 6-1/4" (15.9 cm), blade 8 mm wide
MI-215	HOHMANN Retractor, 9-1/4" (23.5 cm), blade 10 mm wide
MI-216	HOHMANN Retractor, 9-1/4" (23.5 cm), blade 18 mm wide
MI-217	HOHMANN Retractor, 9-1/4" (23.5 cm), blade 25 mm wide
MI-218	HOHMANN Retractor, 9-1/4" (23.5 cm), blade 43 mm wide
MI-47	LAMBERT-LOWMAN Bone Clamp, 8" (20.3 cm), 2 X 2 prong jaws 1-3/8" (3.5 cm) wide jaws
MI-990	MARTIN Cartilage Clamp, 7" (17.8 cm)
MI-992	MARTIN Cartilage Clamp, 8" (20.3 cm)

Items in **bold** represent the most popular patterns.



MI-200

MI-202

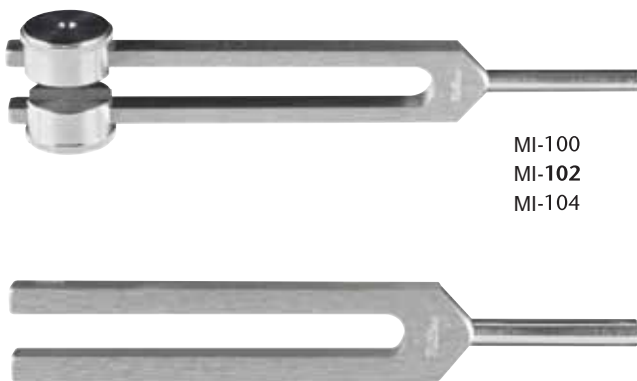
MI-220

MI-3200

MI-660

MI-201

MI-226



MI-100  
MI-102  
MI-104

MI-106  
MI-108



MI-120

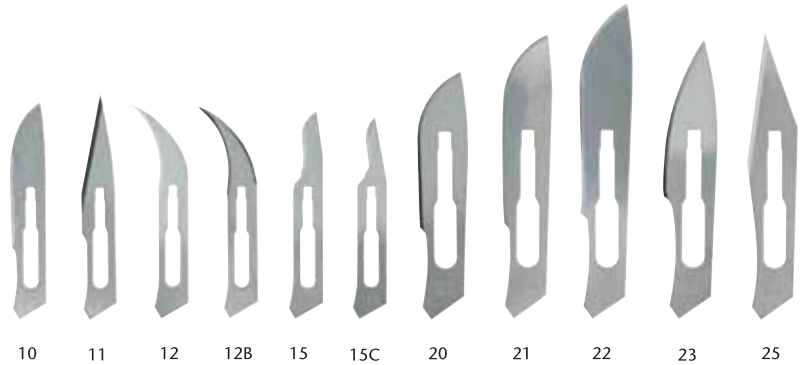
REF	Description
MI-200	TAYLOR Percussion Hammer, 7" (17.8 cm), pediatric size, solid handle
MI-202	<b>TAYLOR Percussion Hammer, 7-1/2" (19.1 cm), standard size, solid handle, chrome</b>
MI-220	BUCK Neurological Hammer, 7-3/4" (19.7 cm), with brush and needle (screw into handle), chrome
MI-3200	Fiberglass Tape Measure, 1/4" (6.4 mm) wide, graduated to 60" (152.4 cm) on one side, to 150 cm on other side. Plastic case with pushbutton tape return
MI-660	Flexible Ruler, stainless, 6" (15.2 cm) X 1/2" (1.3 cm), graduated in 1/32" (0.8 mm) fractions and mm
MI-201	Pin and Wire Gauge
MI-226	WARTENBERG Neurological Pin Wheel, 7" (17.8 cm)
MI-100	Tuning Forks, Aluminum Alloy, C-64 Vibrations
MI-102	<b>Tuning Forks, Aluminum Alloy, C-128 Vibrations</b>
MI-104	Tuning Forks, Aluminum Alloy, C-256 Vibrations
MI-106	Tuning Forks, Aluminum Alloy, C-512 Vibrations
MI-108	Tuning Forks, Aluminum Alloy, C-1024 Vibrations
MI-120	Tuning Forks, Aluminum Alloy, Set of 5 Tuning Forks, C-128, C-256, C-512, C-1024 and C-2048 in fitted molded vinyl zippered case

Items in **bold** represent the most popular patterns.

## Surgical Blades, Sterile

### Carbon or Stainless Steel

- Razor-sharp cutting edges for superior cutting and clean incisions
- Sterile, 5-year shelf life
- Individually packaged in foil peel packs
- Convenience of disposables, single-use
- Sizes clearly marked on each blade
- Available in carbon and stainless steel
- Each dispenser box contains 100 blades
- Eleven sizes available



CS*	SS**	
REF	REF	Size
MI-110	10	MI-310
MI-111	11	MI-311
MI-112	12	MI-312
MI-112B	12B	MI-312B
MI-115	15	MI-315
MI-115C	15C	MI-315C

CS*	SS**	
REF.	REF	Size
MI-120	20	MI-320
MI-121	21	MI-321
MI-122	22	MI-322
MI-123	MI-323	23
MI-125	25	MI-325

\*Carbon Steel \*\* Stainless Steel  
 ΔB is a double edged blade  
 ΔΔC is an angled blade

\*Carbon Steel \*\* Stainless Steel

## Scalpel Handles

For your convenience, Med, Inc. offers a wide array of scalpel blade handles and the Blade Safe Remover to aid in the safe removal of blades and to help protect against accidental cuts and punctures.

REF	Description	Fits Blades	
		10-15C	20-25
MI-7	No. 3, stainless steel 5" graduated in mm and cm	x	-
MI-7R	No. 3, Nickel 5" graduated in mm and cm	x	-
MI-8	No. 4, stainless steel 5.375" graduated in mm and cm	-	x
MI-8R	No. 4, Nickel 5.375" graduated in mm and cm	-	x
MI-9	No. 7, stainless steel 6.5"	x	-
MI-10*	No. 3L, stainless steel 8.5"	x	-
MI-11*	No. 4L, stainless steel 8.5"	-	x
MI-12*	No. 3LA, stainless steel, angled 8.5"	x	-
MI-16	No. 9, stainless steel 4.5"	x	-
MI-17	Siegel, stainless steel, round handle 5.75"	x	-
MI-18	No. 5, plastic handle 5", green	x	-
MI-20	No. 6, plastic handle 5.25", red	-	x
MI-30**	No. 3, fitting blades 5.5", grey	x	-
MI-31**	No. 4, fitting blades 5.5", blue	-	x
MI-400***	Miniature Blade Handle w/chuck 3-3/4", round knurled (3K type)		
MI-401***	Miniature Blade Handle w/self-locking chuck, 3-3/4", round knurled (3K type)		
MI-405***	Self-locking chisel blade handle, stainless steel 5.31"		
MI-100	Blade Safe surgical blade remover for any style handle		





### SPONGE BOWLS

REF	Size
MI-900	4-5/16" x 2-13/64" (12 oz)
MI-901	4-1/4" x 2" (16 oz)
MI-902	<b>5-5/8" x 2-9/32" (22 oz)</b>
MI-903	6-27/64" x 2-1/4" (30 oz)
MI-904	6-27/64" x 2-3/4" (36 oz)
MI-905	7-9/16" x 3-3/16" (47 oz)
MI-906	8-3/16" x 3-5/16" (64 oz)



### IODINE & MEDICINE CUPS

REF	Description	Size
MI-912	<b>Iodine Cup</b>	<b>3-5/16" x 2" (6 oz)</b>
MI-913	Iodine Cup	5-1/32" x 2-23/64" (14 oz)
MI-914	<b>Medicine Cup, Graduated</b>	<b>2-5/32" x 2-5/32" (2 oz)</b>



### TUMBLER

REF	Size
MI-907	2-7/8 x 3-1/8 (7 oz)



### SOLUTION BASINS

REF	Size
MI-908	12-33/64" x 3-35/64" (4-1/2 qt)
MI-909	13-25/32" x 4-17/32" (6 qt)
MI-910	<b>13-25/32" x 4-59/64" (7 qt)</b>

Items in **bold** represent the most popular patterns.

**FORCEPS JARS**

REF	Size
MI-915	1-19/64" x 3-5/32"
MI-916	2-3/16" x 4-21/64"
MI-917	2-3/16" x 7-5/64"

**DRESSING JARS WITH COVERS**  
Cover included with jar

REF	Size
MI-953	4" x 2-5/8" (1/2 qt)
MI-954	5" x 6-3/8" (2 qt)
MI-955	5-7/8" x 7-5/64" (3 qt)

**EMESIS BASINS**

REF	Size
MI-918	7-7/8" x 3-3/4" x 1-19/64" (10 oz)
MI-919	8-5/32" x 3-55/64" x 1-17/32" (12 oz)
MI-920	9-23/32" x 4-51/64" x 1-11/16" (20 oz)

**INSTRUMENT TRAYS**

REF	Size
MI-934	10" x 6-1/2" x 23/32", rolled edge
MI-935	14" x 10" x 5/8", rolled edge
MI-936	21-11/32" x 16-7/16" x 7/8", rolled edge

**PERFORATED MAYO TRAYS**

REF	Size
MI-921	10" x 6-1/2" x 23/32"
MI-922	14" x 10" x 5/8"
MI-924	17" x 11-5/8" x 3/4"
MI-925	19-11/64" x 12-23/32" x 33/64"

**NON-PERFORATED MAYO TRAYS**

REF	Size
MI-926	10" x 6-1/2" x 23/32"
MI-927	14" x 10" x 5/8"
MI-929	17" x 11-5/8" x 3/4"
MI-930	19-11/64" x 12-23/32" x 33/64"

Items in **bold** represent the most popular patterns.


**INSTRUMENT TRAYS & COVERS** cover sold separately

REF	Description	Size
MI-945	Instrument Tray, 12, 2-1/2, Solid	12-23/32" x 10-27/64" x 2-1/2"
MI-946	Instrument Tray, 12, 3-3/4, Solid	12-23/32" x 10-27/64" x 3-3/4"
MI-947	Flat Cover, 12, For REF 3-945 & 3-946	12-29/32" x 10-35/64" x 7/16"
MI-948	<b>Instrument Tray, 10, 1, Solid</b>	<b>10-25/64" x 6-49/64" x 1-27/32"</b>
MI-949	Flat Cover, 10, For REF 3-948	10-15/32" x 6-61/64" x 7/16"


**CATH TRAYS & COVERS** cover sold separately

REF	Description	Size
MI-937	<b>Cath Tray, 8 x 5 x 1</b>	<b>8-25/32" x 4-61/64" x 1-49/64"</b>
MI-938	Cath Tray, 8-7/8 x 5 x 3	8-7/8" x 5" x 3"
MI-939	Flat Cath Cover, 8, For REF 3-937 & 3-938	8" x 5" x 7/16"
MI-940	Dome Cath Cover, 8, For REF 3-937 & 3-938	8" x 5" x 7/16"
MI-941	Cath Tray, 8 x 3 x 1-1/2, Narrow	8-35/64" x 3-5/64" x 1-1/2"
MI-942	Dome Cath Cover, 8, Narrow, For REF 3-941	8-21/32" x 3-5/16" x 19/32"
MI-943	Cath Tray, 15-3/4 x 2-3/4 x 2, Long	15-3/4" x 2-3/4" x 2"
MI-944	Dome Cath Cover, 15, Long, For REF 3-943	15-13/16" x 3-1/32" x 29/32"

Items in **bold** represent the most popular patterns.



INSTRUMENT STRINGERS



MI-70 to MI-74



MI-75 to MI-80



MI-81 to MI-85



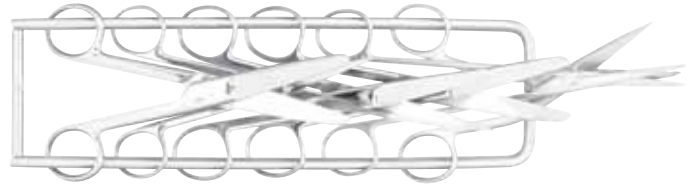
MI-86 to MI-89



MI-90 to MI-95



MI-96 to MI-99



REF	Description	Size
MI-70	Stringer - Side Lock, Wide	2-1/2" x 8"
MI-71	Stringer - Side Lock, Wide	2-1/2" x 10"
MI-72	Stringer - Side Lock, Wide	2-1/2" x 12"
MI-74	Stringer - Side Lock, Wide	2-1/2" x 16"
MI-75	Stringer - Side Lock	2-1/2" x 6"
MI-76	Stringer - Side Lock	2-1/2" x 8"
MI-77	Stringer - Side Lock	2-1/2" x 10"
MI-78	Stringer - Side Lock	2-1/2" x 12"
MI-79	Stringer - Side Lock	2-1/2" x 16"
MI-80	Stringer - Side Lock	2-1/2" x 18"
MI-81	Stringer - Side Lock	5" x 8"
MI-82	<b>Stringer - Side Lock</b>	<b>5" x 10"</b>
MI-83	Stringer - Side Lock	5" x 12"
MI-84	Stringer - Side Lock	5" x 16"
MI-85	Stringer - Side Lock	5" x 18"
MI-86	Stringer - Open U	2-1/2" x 6"
MI-87	Stringer - Open U	2-1/2" x 8"
MI-88	Stringer - Open U	2-1/2" x 10"
MI-89	Stringer - Open U	2-1/2" x 12"
MI-90	<b>Stringer - Center Lock</b>	<b>2-1/2" x 6"</b>
MI-91	Stringer - Center Lock	2-1/2" x 8"
MI-92	Stringer - Center Lock	2-1/2" x 10"
MI-93	<b>Stringer - Center Lock</b>	<b>2-1/2" x 12"</b>
MI-94	<b>Stringer - Center Lock</b>	<b>2-1/2" x 16"</b>
MI-95	<b>Stringer - Center Lock</b>	<b>2-1/2" x 18"</b>
MI-96	Stringer - Closed U	2-1/2" x 6"
MI-97	Stringer - Closed U	2-1/2" x 8"
MI-98	Stringer - Closed U	2-1/2" x 10"
MI-99	Stringer - Closed U	2-1/2" x 12"

Items in **bold** represent the most popular patterns.



## Med Instruments Medical Equipment Trading LLC

Dubai Investment park 1 building name: falcon house  
second floor: section 204 and 203 second floor  
Czar business center

Tel:00971 55 10 2525 1

E-mail: [info@medinstrument.net](mailto:info@medinstrument.net)

Web: [www.medinstrument.net](http://www.medinstrument.net)